

MRI Upgrade

A Signa HDxt upgrade wraps an entirely new system around your current magnet to give you:

- Enhanced image quality on every scan
- Up to 50% faster end-to-end exam times
- Expanded clinical capabilities with the industry's broadest portfolio of advanced applications
- Greater consistency with fewer errors and rescans
- Faster exam set-up and execution

Your clinicians can make more definitive diagnoses on the patients most difficult to examine with conventional MR. So you'll be able to attract fresh referrals. Grow patient volumes. Gain a competitive advantage. And better market your imaging services to specific patient populations.

GE Healthcare



Signa[®] HDxt 1.5T
See More, Do More...

The next generation in High-Definition MR.



Before Upgrade

MSK

T1
20 slices
320x224
3:41 min

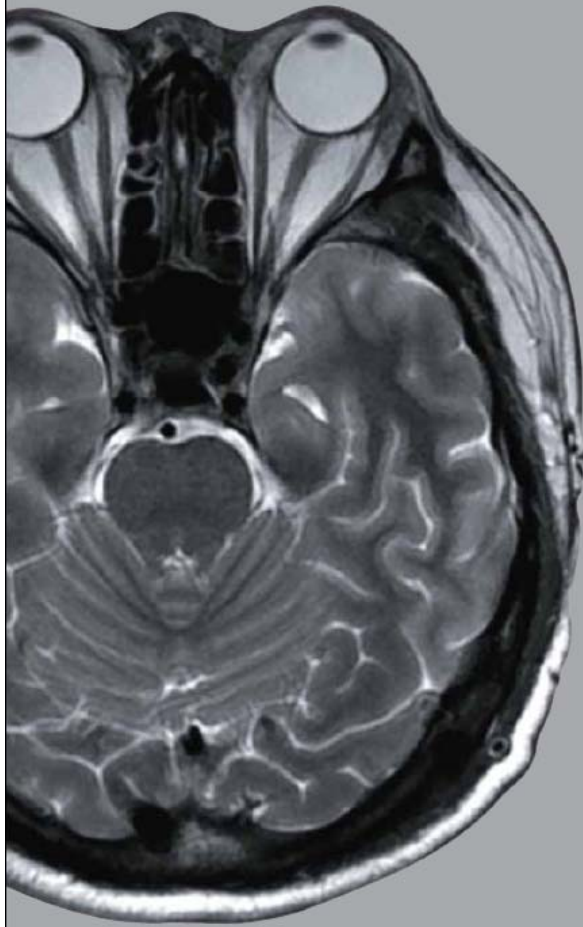


After Upgrade



MSK

T1
20 slices
416x256
1:02 min



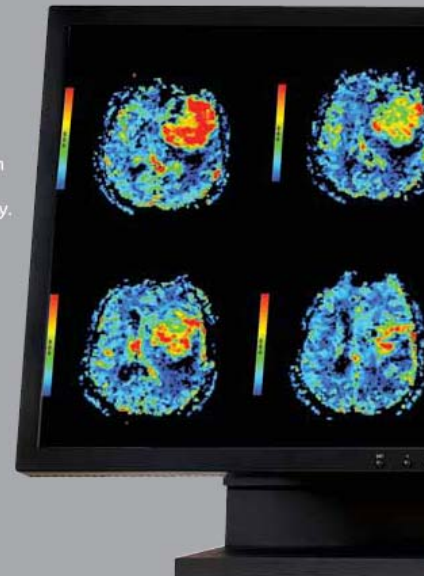
High-Density Head-Neck-Spine Array

Image the head, neck, and spine without changing arrays or repositioning the patient. And, do it with high definition.



BrainSTAT

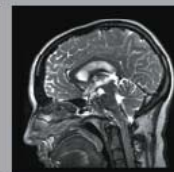
BrainSTAT is a post-processing tool for evaluating blood distribution patterns in the brain tissue. With BrainSTAT, clinicians can get a more objective assessment of pathology.



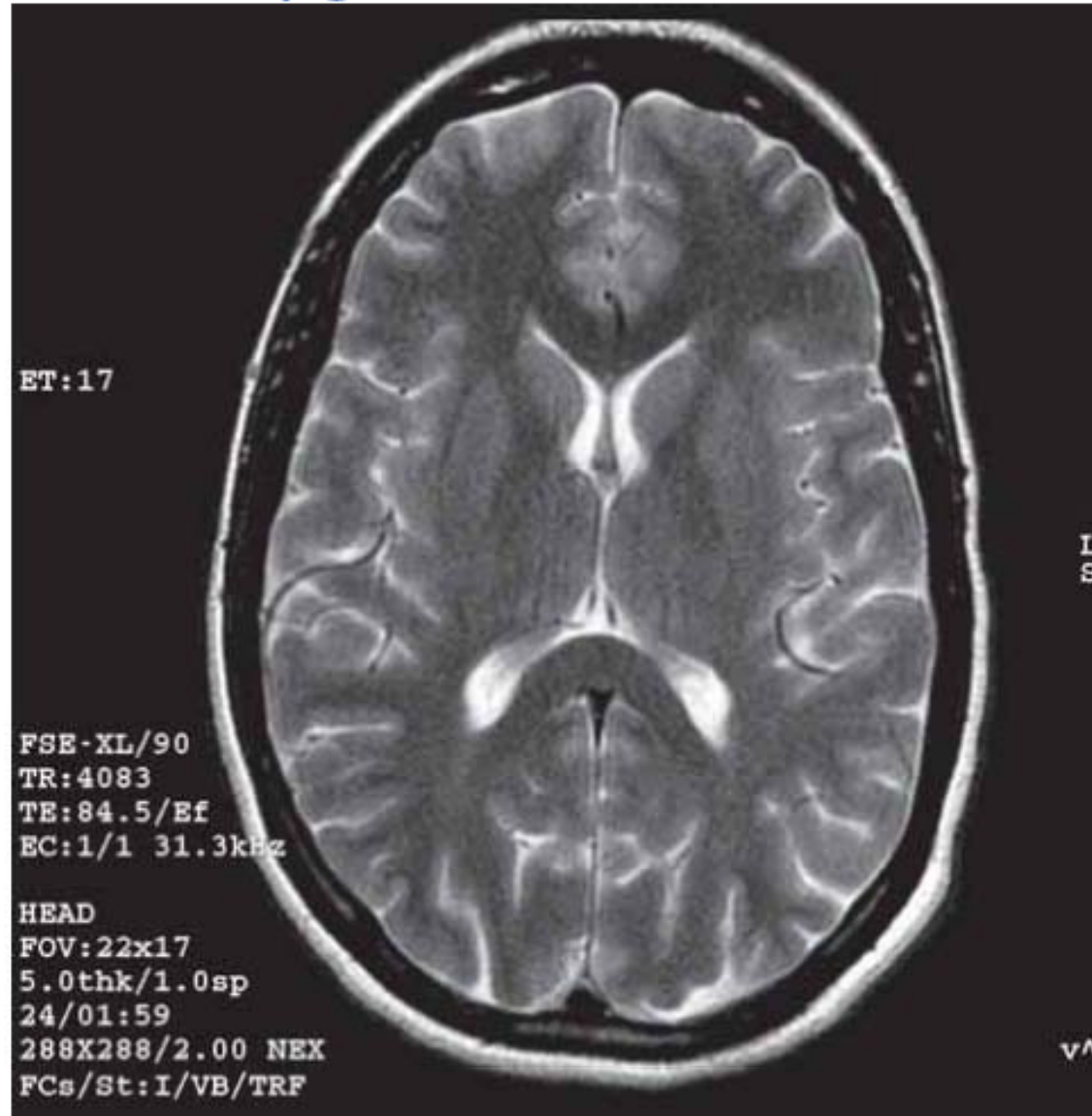
Cube™ with ARC™

A GE-exclusive, Cube replaces several slice-by-slice, plane-after-plane 2D acquisitions with a single 3D volume scan—providing you with T2, T2 FLAIR, or PD contrast. Easily reformat sub-millimeter isotropic volume data from a single acquisition into any plane without gaps—and with the same resolution as the original plane.

ARC is an innovative, auto-calibrating, data-driven, parallel imaging method designed to reduce scan time and streamline reconstruction with high accuracy. In addition, it enables smaller fields of view during prescription, as compared to currently used parallel imaging techniques.

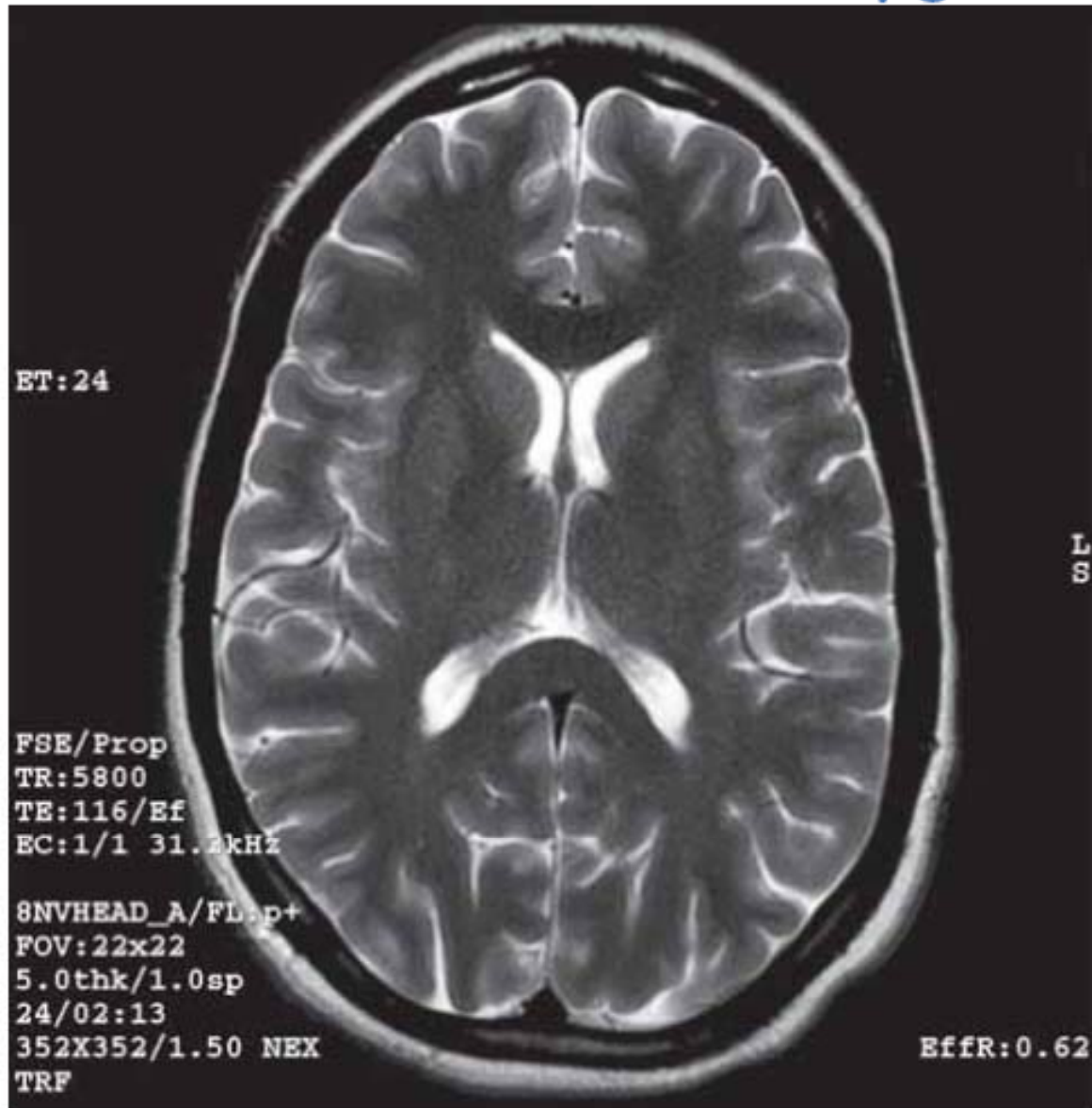


Before Upgrade



Axial T2, 24 slices, 288x288, 1:59 min

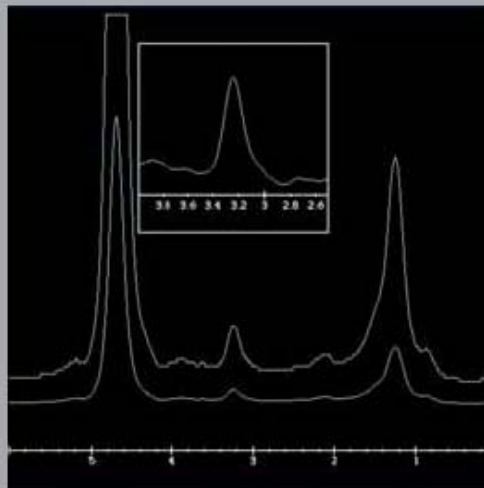
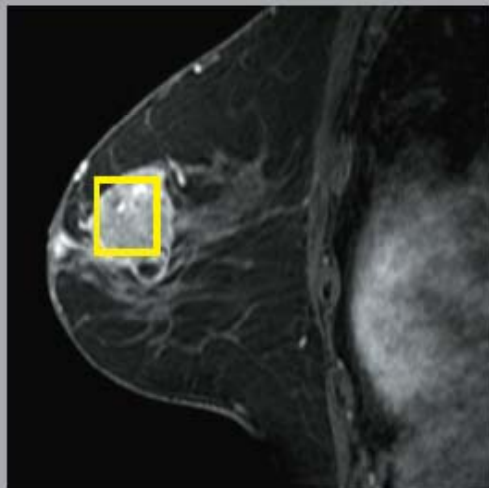
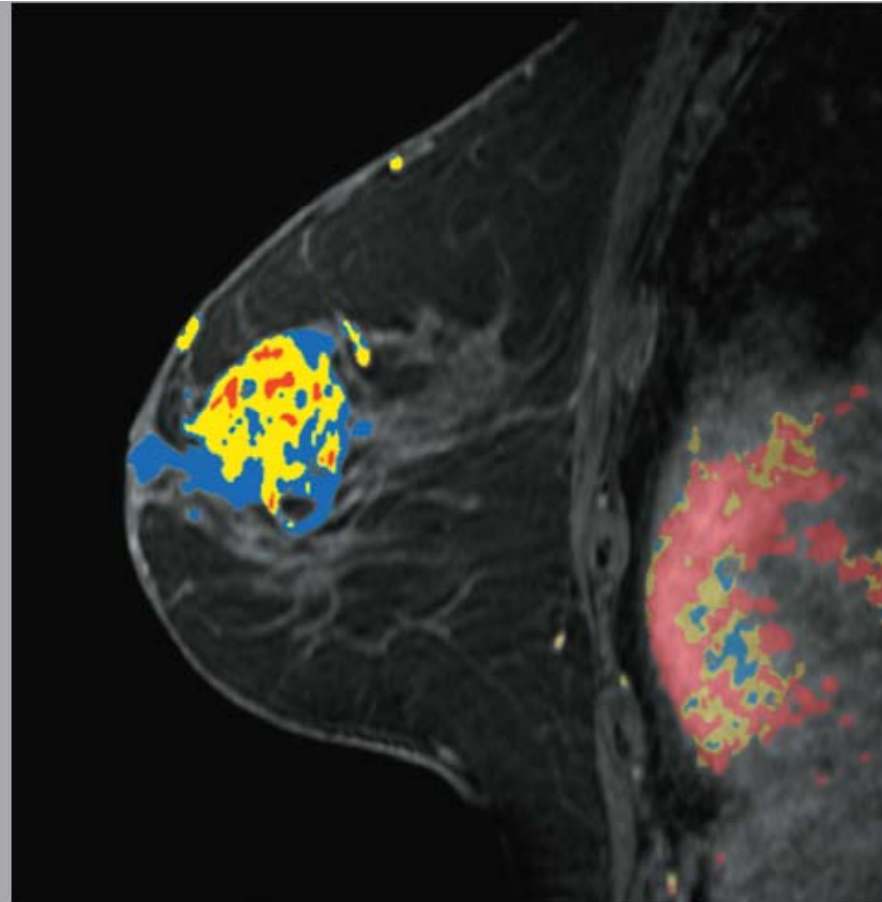
After Upgrade



Axial T2 with PROPELLER, 24 slices, 352x352, 2:13 min

VIBRANT

VIBRANT lays the foundation with the highest combined spatial detail and scanning speed with bilateral shimming for excellent uniform fat saturation. No trade-offs between high spatial and high temporal resolution. Scan both breasts in one fast exam for increased patient comfort and convenience.

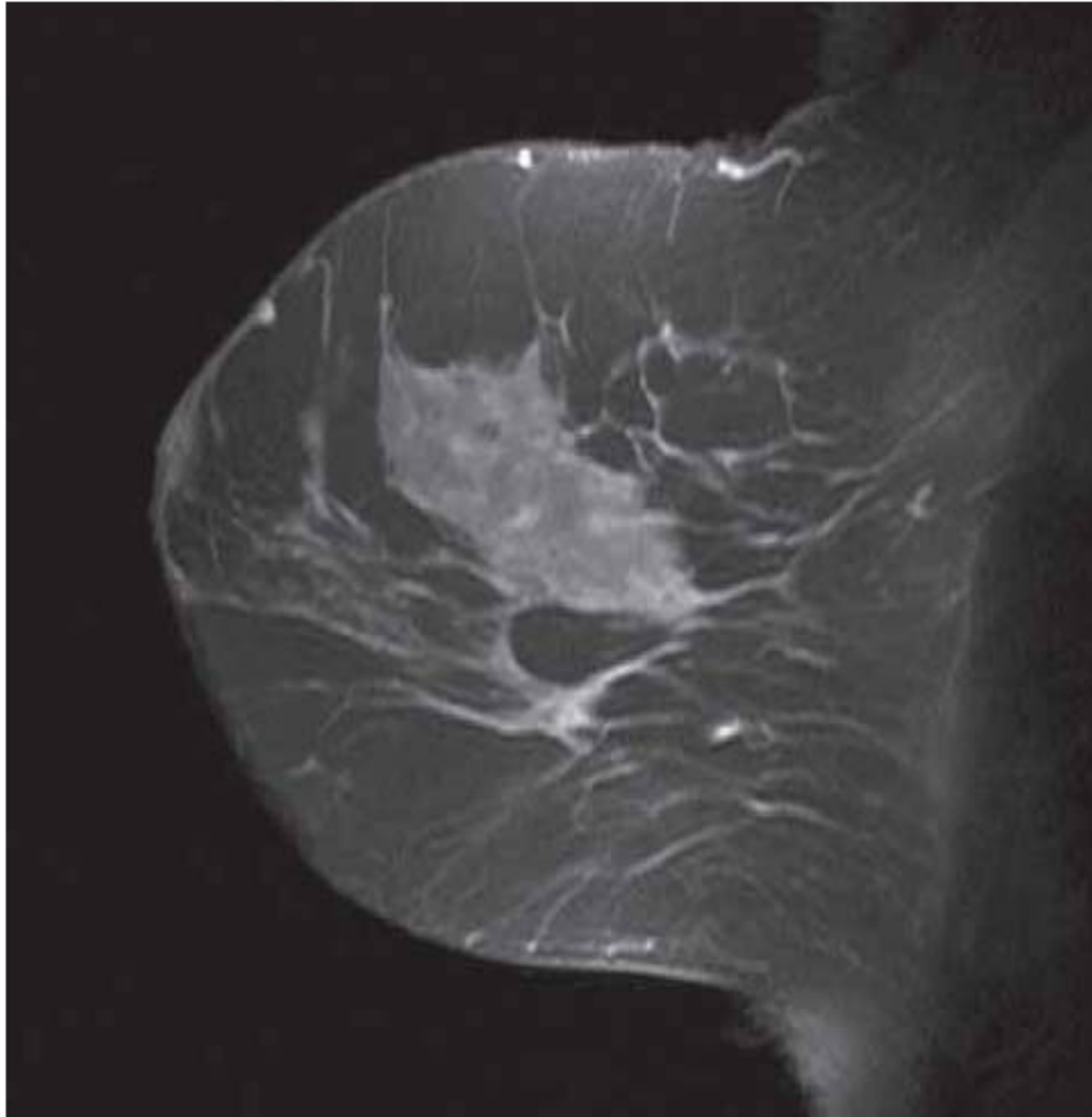


BREASE™ & CADstream

BREASE enhances diagnostic confidence by improving the ability to characterize lesions and monitor response to therapy. It is a breast-specific, single-voxel spectroscopy application designed for ease-of-use and visualization.

CADstream automatically generates the post-processed series and identifies the most suspicious washout curves. Sureloc, included with CADstream, enables point-of-procedure control for MR-guided biopsies from the HDxt console.

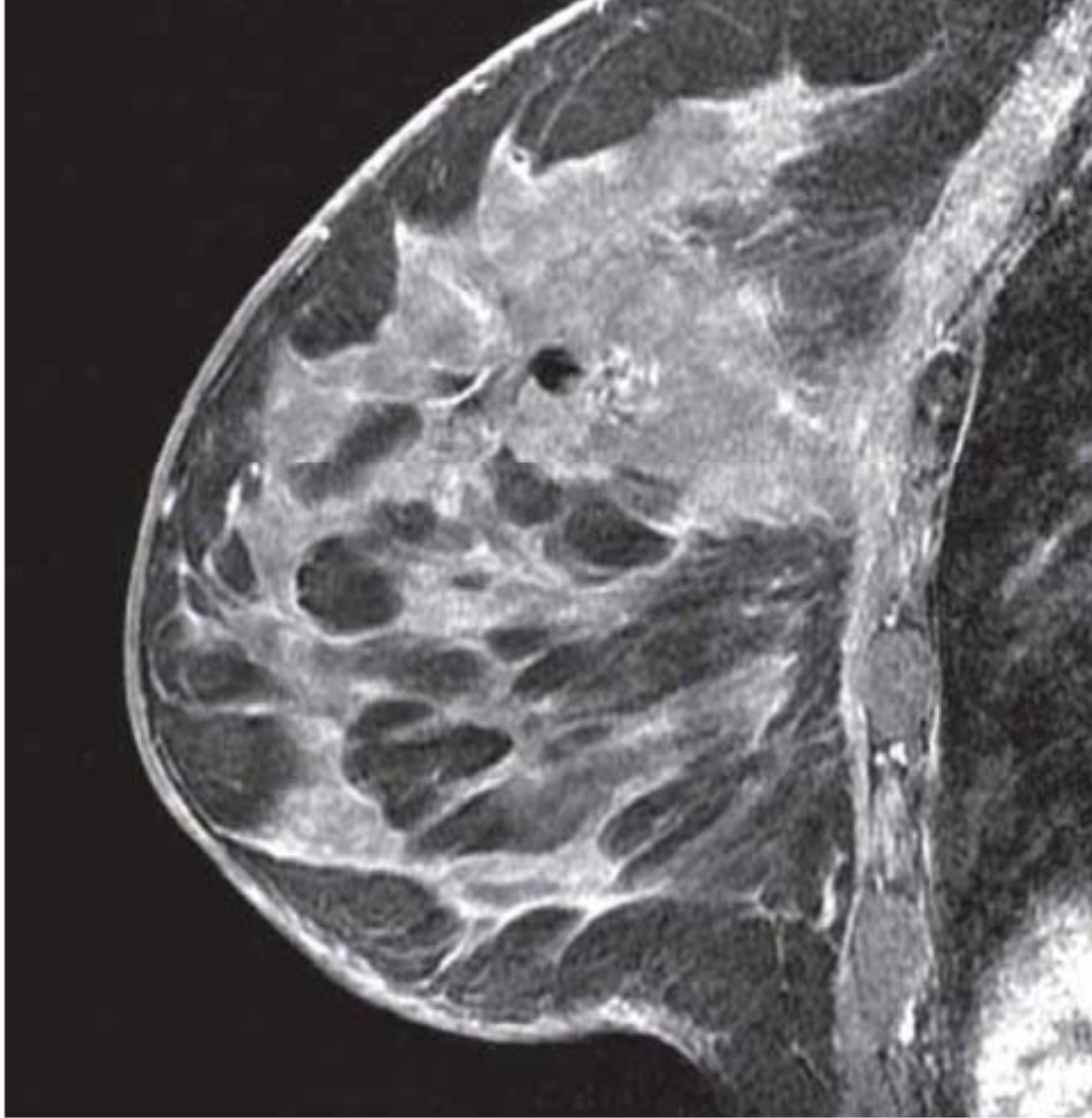
Before Upgrade



LX 4-channel breast array

After Upgrade

Breast



HDxt VIBRANT 8-channel coil

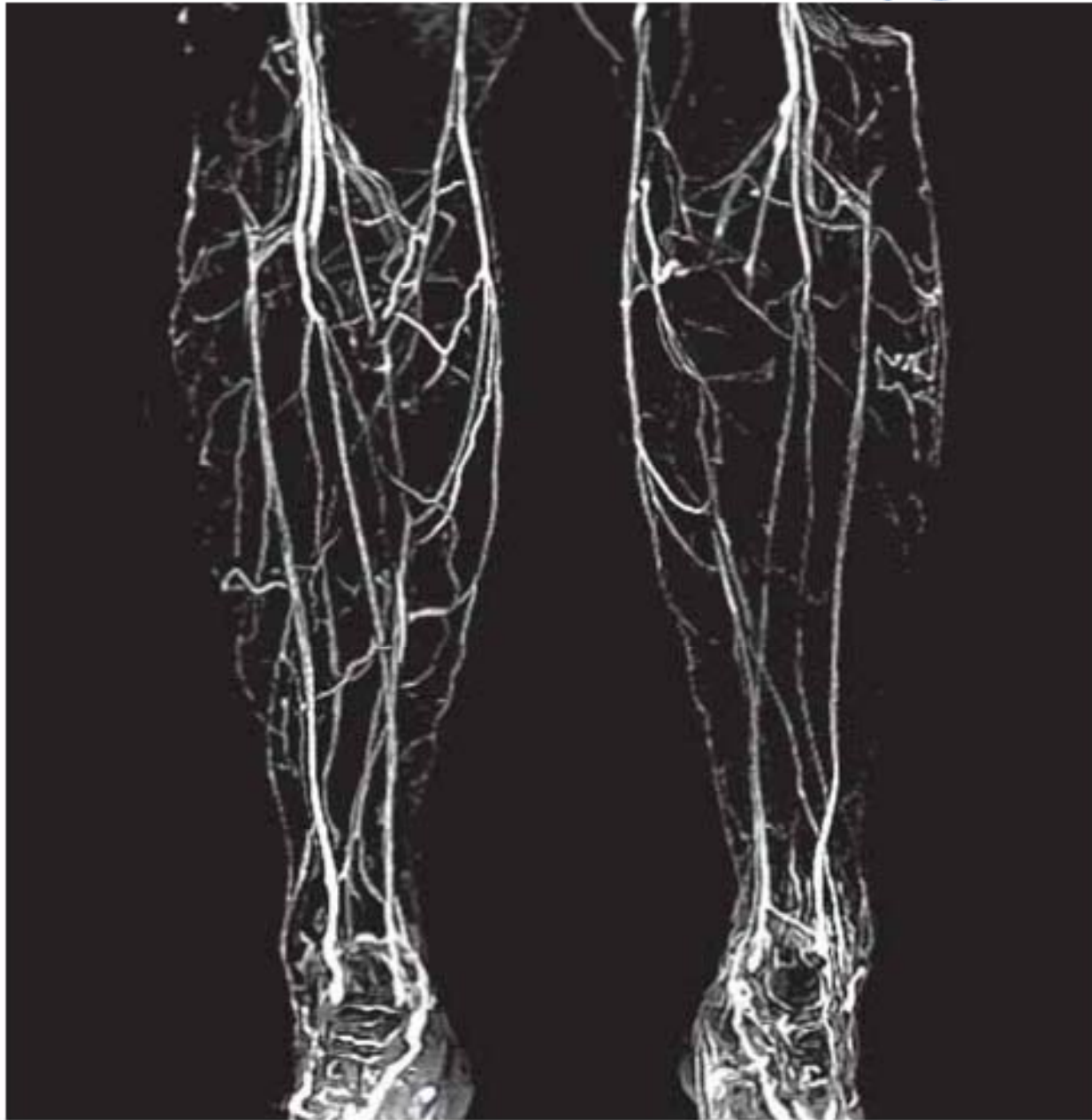
Before Upgrade

MR Angiography



MR Angiography - runoff

After Upgrade



MR Angiography

MR Angiography - TRICKS runoff